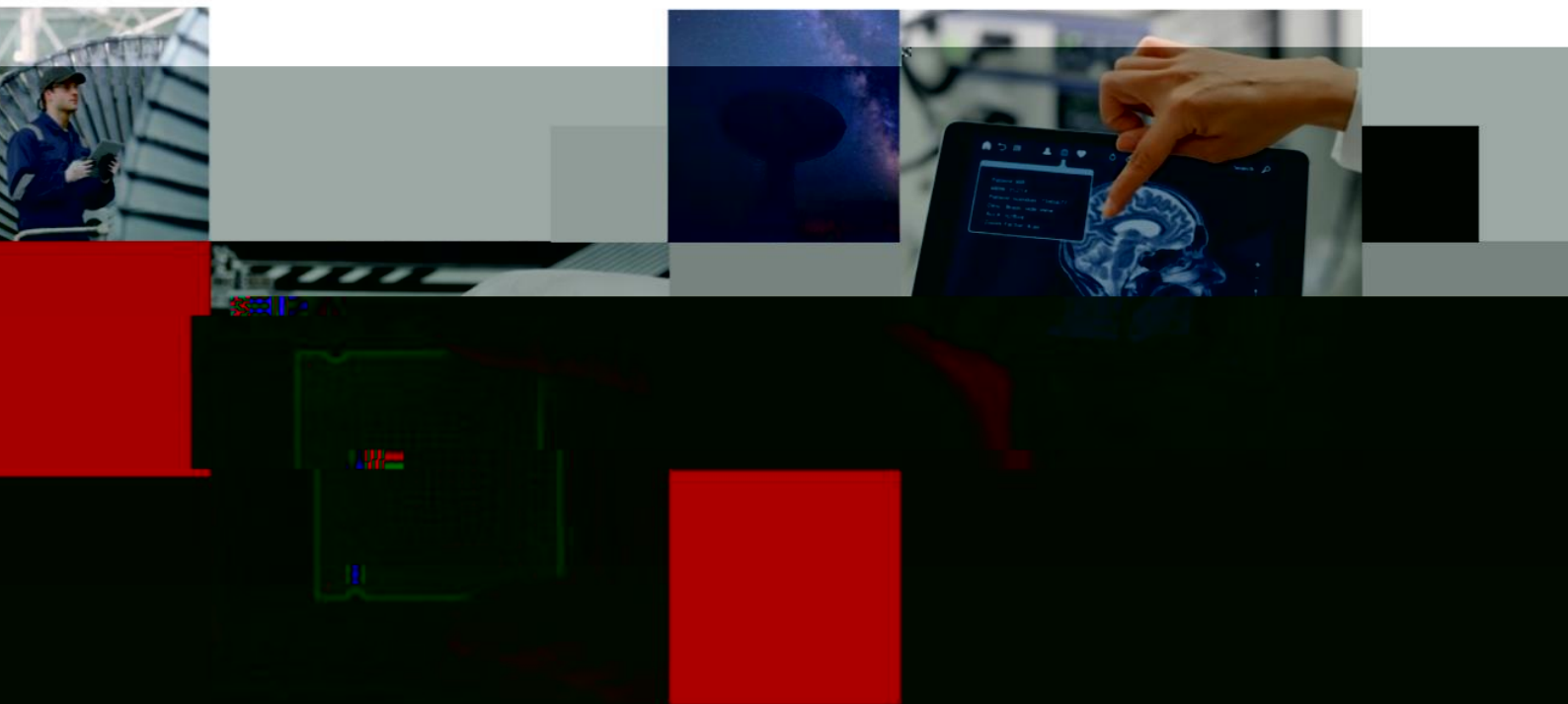


# EC800X QuecDuino EVB

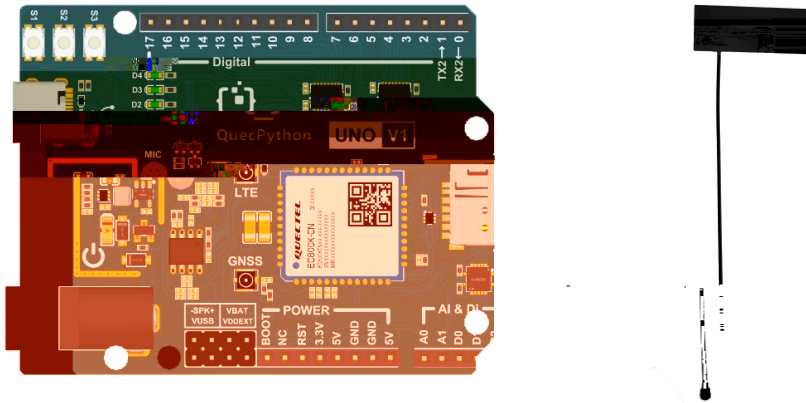


# 1

EC800X QuecDuino EVB                      EC800  
EC800M                      EC800K                      EG800K                      EC800E

## EC800X QuecDuino EVB

QuecDuino EVB 4G FPC



1 EVB

## Features

### CPU

EC800 / EG800 Module Series

### Pins

22x digital pins (GPIO), D0-D3,0-17 up to

2x analog input pins (ADC), A0-A1

### Peripherals

Antenna Interface,LTE & GNSS(option)

SIM Interface, NANO SIM

USB 2.0, TypeC

Arduino female header Interface

Audio(option)

1xMIC onboard

1x 3W Class-D Stereo Amplifier

#### Power

Recommended input voltage (VIN) is 4.5-5.25 V/2A

Power via USB-C® at 5 V

Power via DC05® at 5-16V

3.3V/200mA output

#### Communication

4x UART (pin 0, 7) up to

1x SPI (pin 10-13, ICSP header)

1x I2C (pin 16, 17, SDA, SCL)

3x KEY(S1-S3)

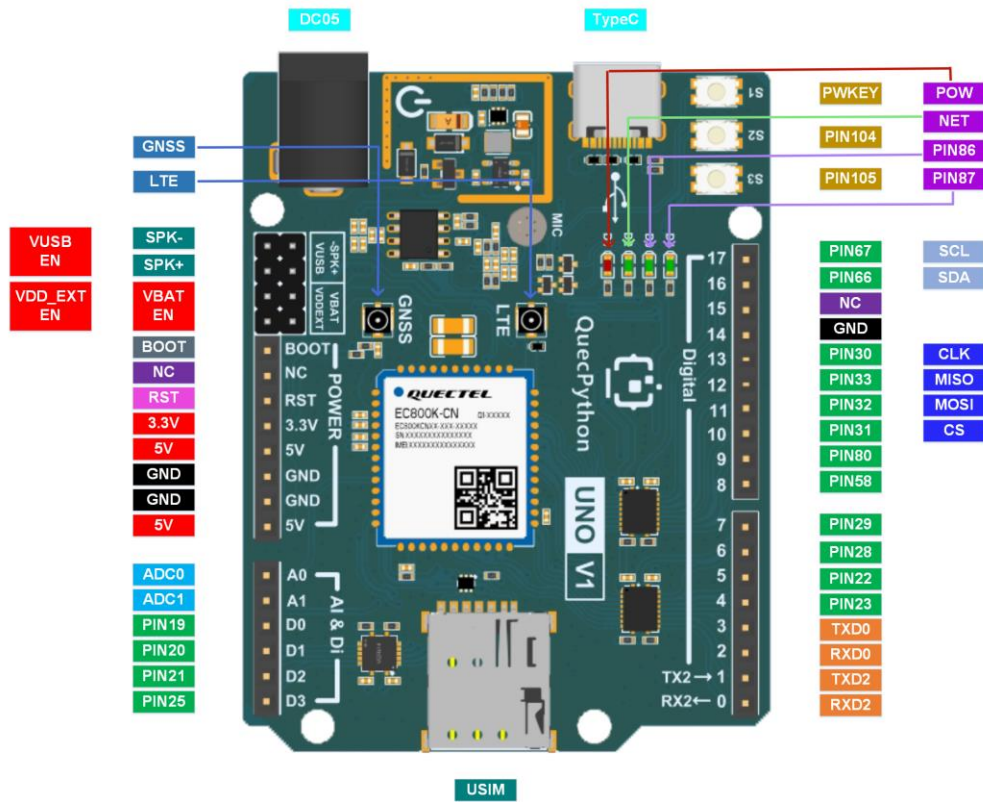
4x LED(D1-D4)

1x RESET(Pull-down reset Module)

1x BOOT(According to different model modules pull up or Pull-down the BOOT pin, Before power-on)

## 2

### 2.1



2 EVB

EVB

VUBS EN VDD\_EXT EN VBAT EN

### 2.2

1

		DC
BOOT	USB_BOOT	
NC		
RST	RESET	

3.3V		3.3V/200mA
5V	/	5V/2A V1.1
GND		
GND		
5V	/	5V/2A V1.1
A0	ADC0	0-1.2 V
A1	ADC1	0-1.2 V
D0	I/O 19	3.3V
D1	I/O 20	3.3V
D2	I/O 21	3.3V
D3	I/O 25	3.3V
0		3.3V
1		3.3V
2		3.3V
3		3.3V
4	I/O 23	3.3V
5	I/O 22	3.3V
6	I/O 28	3.3V
7	I/O 29	3.3V
8	I/O 58	3.3V
9	I/O 80	3.3V
10	I/O 31	3.3V
11	I/O 32	3.3V
12	I/O 33	3.3V
13	I/O 30	3.3V
14		
15	NC	
16	I/O 66	3.3V



BOOT  
BOOT

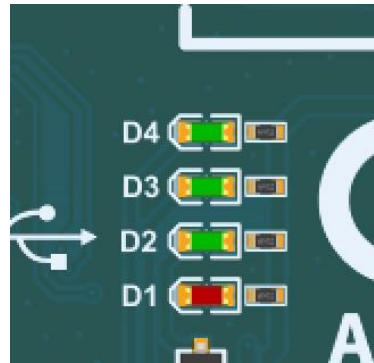
BOOT

BOOT GND

## 2.3

EVB 4

D1



5

D2

2

D2	200ms /1800ms	
	1800ms /200ms	
	125ms /125ms	

D3 D4

86 87

### 3 SIM



6 SIM

EVB NANO SIM USIM ETSI IMT-2000  
1.8 V 3.0 V USIM

### 4 USB



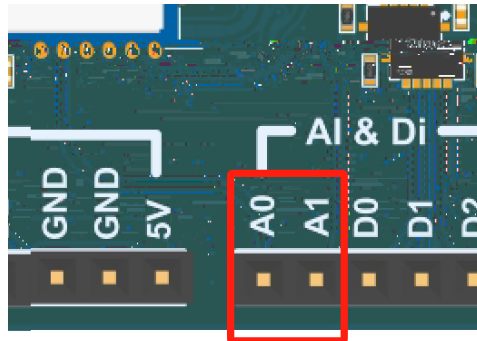
7 USB

EVB 1 TypeC USB USB USB 2.0  
USB 2.0 480 Mbps 12 Mbps  
AT GNSS NMEA

## 5 ADC

EVB 2

ADC



8 ADC

3 ADC

参数	最小值	典型值	最大值	单位
ADC0 电压	0	-	1.2	V
ADC1 电压	0	-	1.2	V
ADC 分辨率	-	-	12	位

## 6

### 6.1

#### 6.1.1

5

引脚名	引脚号	I/O	描述	备注
ANT_MAIN	35	AIO	主天线接口	50 Ω 特性阻抗。

#### 备注

模块支持 Wi-Fi Scan 功能。由于共用主天线接口，两种功能不可同时使用。时分复用，Wi-Fi Scan 只接收不发送。

6

工作频段	发送 (MHz)	接收 (MHz)	频点
710	LTE-FDD B34	1970~1980	710
800	LTE-FDD B38	1710~1735	805
894	LTE-FDD B35	824~849	899
960	LTE-FDD B38	880~915	925
~2025	LTE-TDD B34	2010~2025	2010
~2620	LTE-TDD B38	2570~2620	2570
~1920	LTE-TDD B39	1880~1920	1880
~2400	LTE-TDD B40	2300~2400	2300
~2675	LTE-TDD B41	2535~2675	2535

### 6.1.2

7

最大值 (dBm)	最小值 (dBm)	频段
23 dBm ±2 dB	< -39 dBm	LTE-FDD B1/B3/B5/B8
23 dBm ±2 dB	< -39 dBm	LTE-TDD B34/B38/B39/B40/B41

### 6.1.3

8

频段	接收灵敏度 (典型值) (dBm)			3GPP 要求 (主集 + 分集)
	主集	分集	主集 + 分集	
LTE-FDD B1 (10 MHz)	-99.5 dBm	-	-	-96.3 dBm
LTE-FDD B3 (10 MHz)	-99.0 dBm	-	-	-93.3 dBm
LTE-FDD B5 (10 MHz)	-98.5 dBm	-	-	-94.3 dBm
LTE-FDD B8 (10 MHz)	-99.0 dBm	-	-	-93.3 dBm
LTE-TDD B34 (10 MHz)	-100.0 dBm	-	-	-96.3 dBm
LTE-TDD B38 (10 MHz)	-99.0 dBm	-	-	-96.3 dBm
LTE-TDD B39 (10 MHz)	-100.0 dBm	-	-	-96.3 dBm
LTE-TDD B40 (10 MHz)	-100.5 dBm	-	-	-96.3 dBm
LTE-TDD B41 (10 MHz)	-99.0 dBm	-	-	-94.3 dBm

## 6.2 GNSS

- EVB GNSS GNSS
- GPS BDS GLONASS Galileo
- NMEA 0183 NMEA AT USB
- UART 1 Hz
- GNSS AT

### 6.2.1

9

GPS	1575.42 ±1.023 (L1)	MHz
BDS	1561.098 ±2.046 (B1I)	
Galileo	1575.42 ±2.046 (E1)	
GLONASS	1597.5~1605.8 (L1)	

### 6.2.2 GNSS

10 GNSS

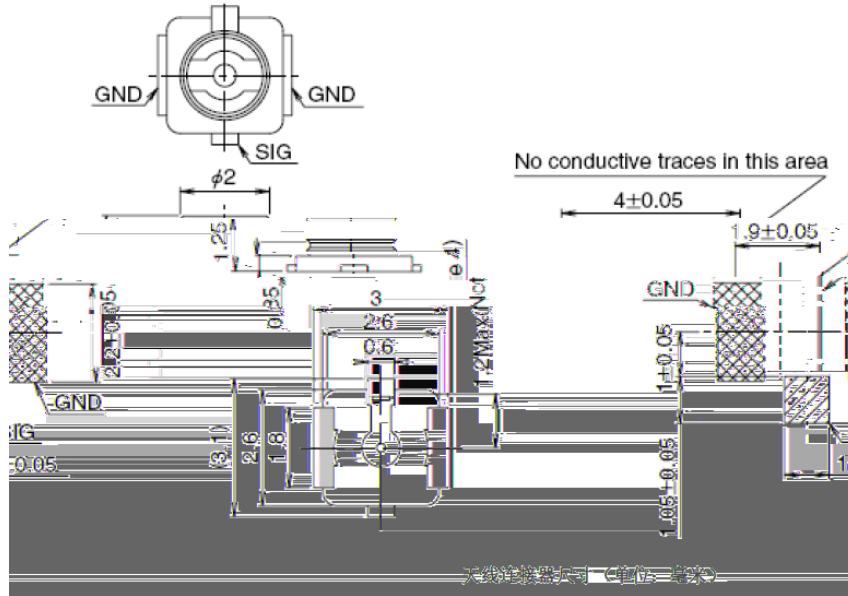
参数	条件	典型值	单位
灵敏度	捕获	-146	dBm
	重捕	-160	
	追踪	-160	
首次定位时间	冷启动 @ 空旷区域	28	s
	温启动 @ 空旷区域	27	
	热启动 @ 空旷区域	3.7 <sup>3</sup>	

#### 备注

1. 追踪灵敏度：模块可以保持对导航信号的跟踪和定位所需的最低信号电平（持续定位至少2分钟）。
2. 重捕灵敏度：模块接收的导航信号失锁后3分钟内重新捕获导航信号并正常定位所需的最低信号电平。
3. 捕获灵敏度：模块进行冷启动后3分钟内，捕获导航信号并成功定位所需的最低信号电平。

### 6.3

### EVB



9

mm

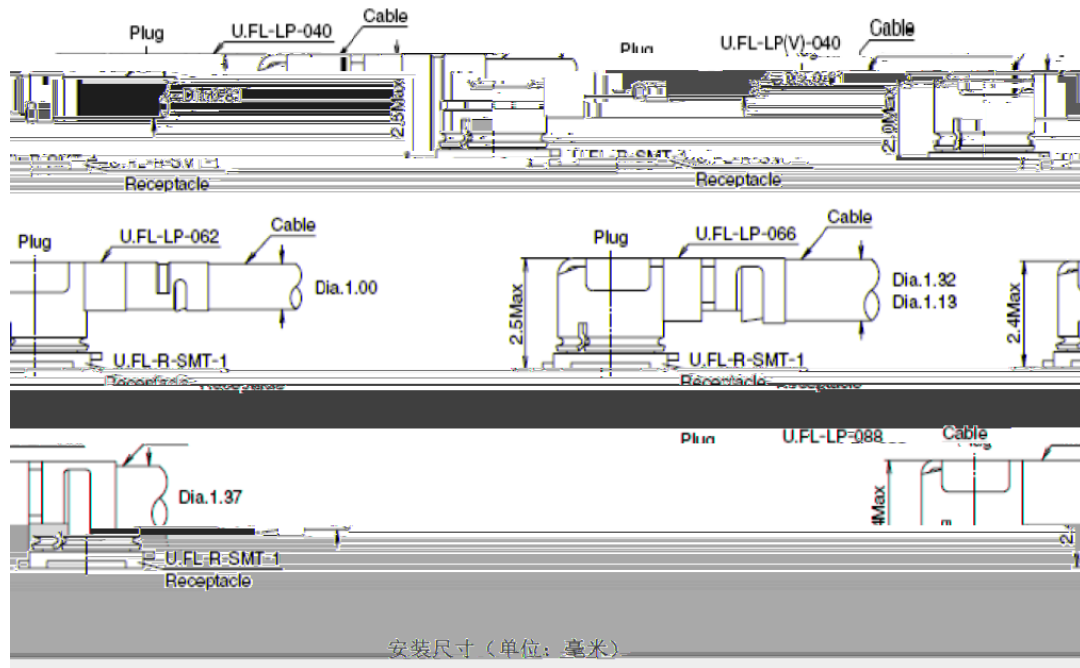
### U.FL-LP

U.FL-LP-006		U.FL-LP-006-040		U.FL-LP-060		U.FL-LP-060-040	
4	5	4	4	3.4	3.4	4	4
2.4mm Max. (2.3mm Nom.)	2.4mm Max. (2.3mm Nom.)	2.5mm Max. (2.4mm Nom.)	2.5mm Max. (2.4mm Nom.)	2.9mm Max. (2.9mm Nom.)	2.9mm Max. (2.9mm Nom.)	2.4mm Max. (2.3mm Nom.)	2.4mm Max. (2.3mm Nom.)
1.1mm	1.1mm	1.1mm	1.1mm	1.32mm	1.32mm	1.1mm	1.1mm
Coaxial cable	Coaxial cable	Coaxial cable	Coaxial cable	Coaxial cable	Coaxial cable	Coaxial cable	Coaxial cable
45.5	71.7	53.7	53.7	59.1	59.1	34.8	34.8
		RoHS	RoHS	RoHS	RoHS	RoHS	RoHS
		YES	YES	YES	YES	YES	YES

U.FL-LP 连接线系列

10

mm



11

mm

IPEX

<https://www.i-pex.com>

## 7

### 7.1

11

TypeC	-0.3	6	V
DC	-0.3	16	V
3.3V	-0.3	3.4	V
	-0.3	3.4	V
ADC0	-	1.2	V
ADC1	-	1.2	V
5V	-	2	A

## 7.2

12

TypeC		4.5	5.0	5.25	V
DC		4.5	12	16	V
I	LTE	-	1.5	2	A

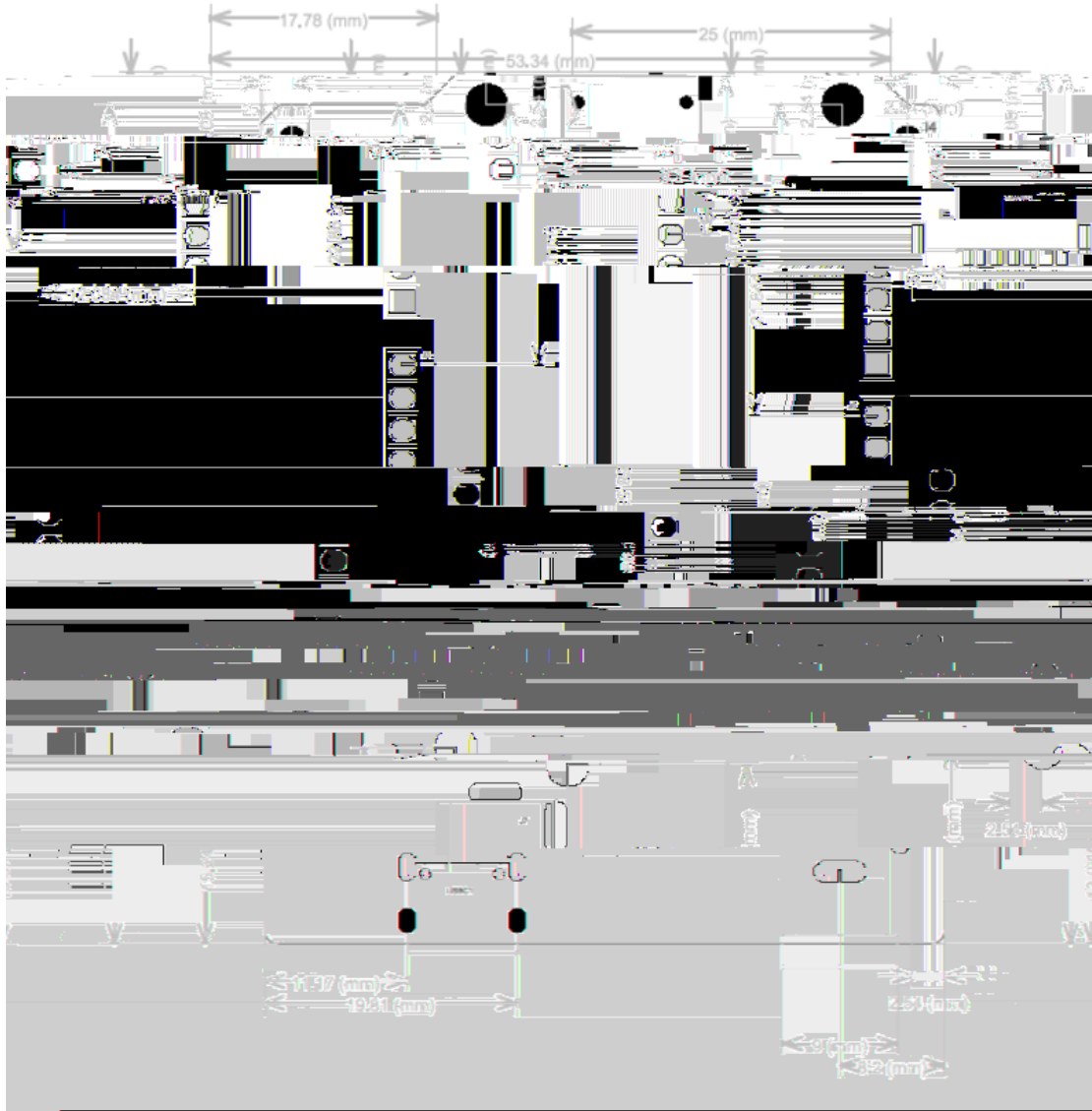
## 7.3

5V	GND	± 8	± 10	KV
USB		± 8	± 10	KV

# MMO%

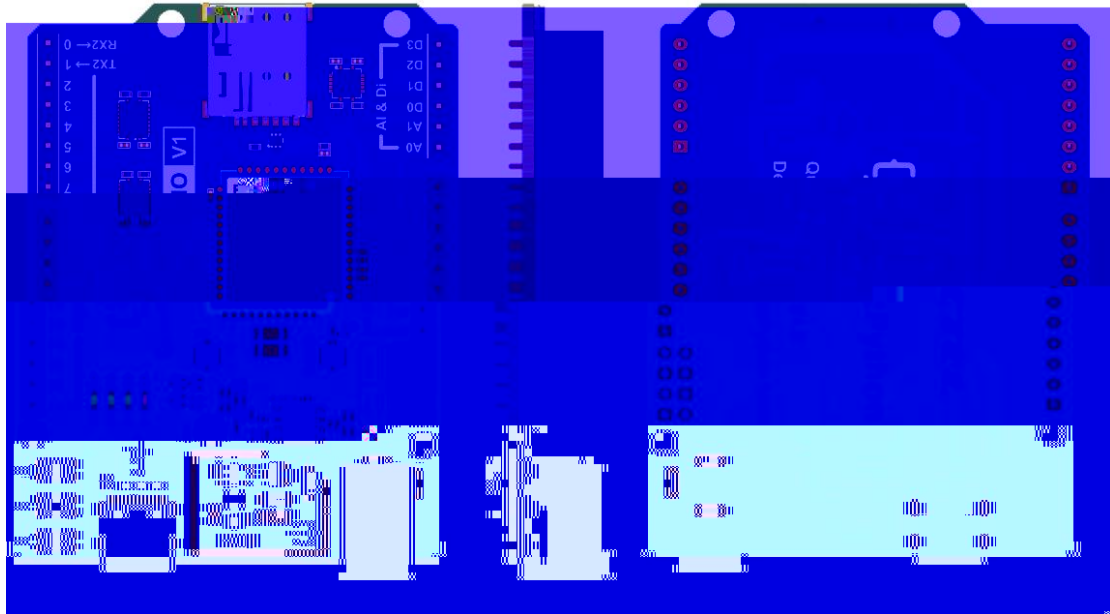
# 8

## 8.1



12 EVB

## 8.2



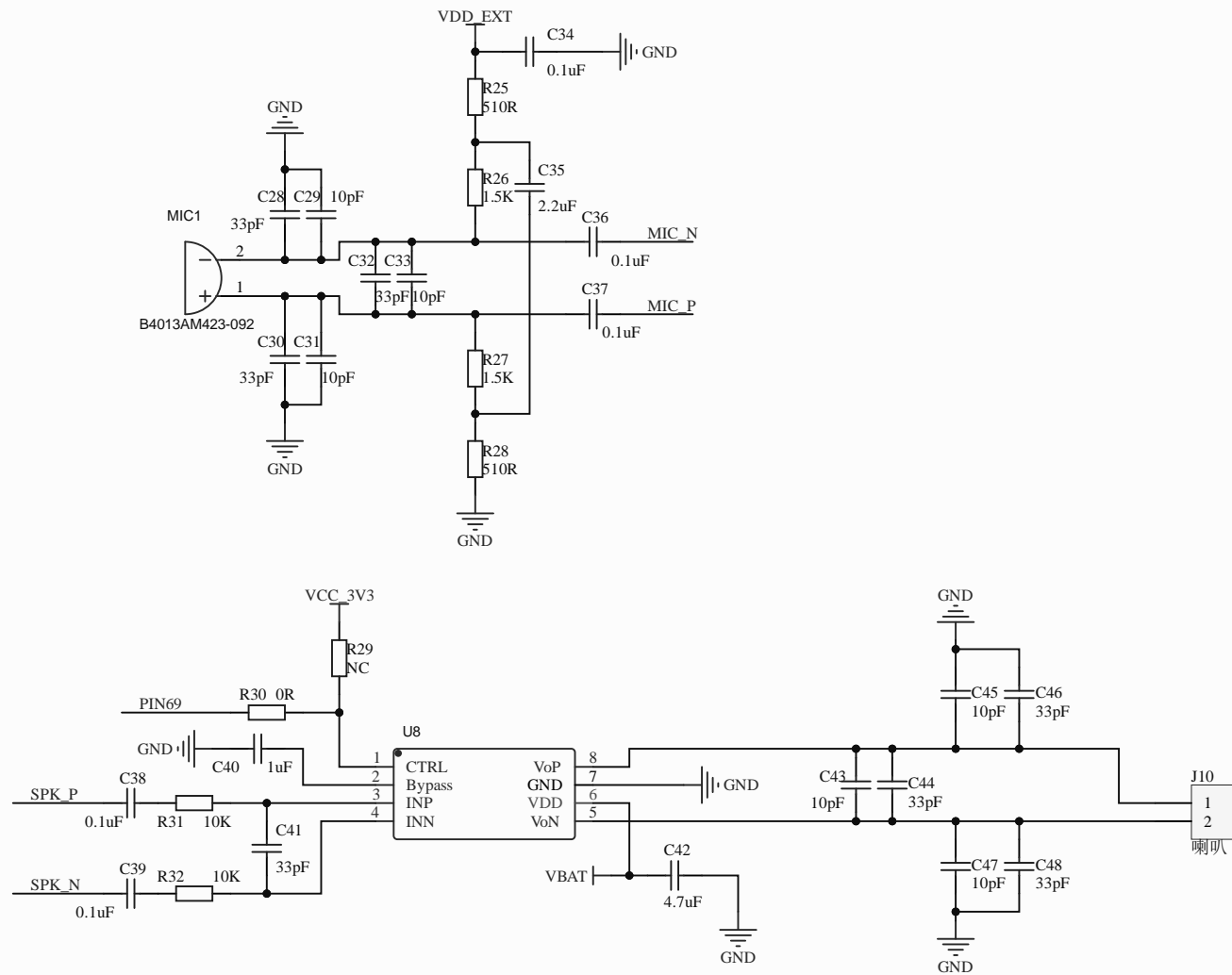
13 EVB

## 9

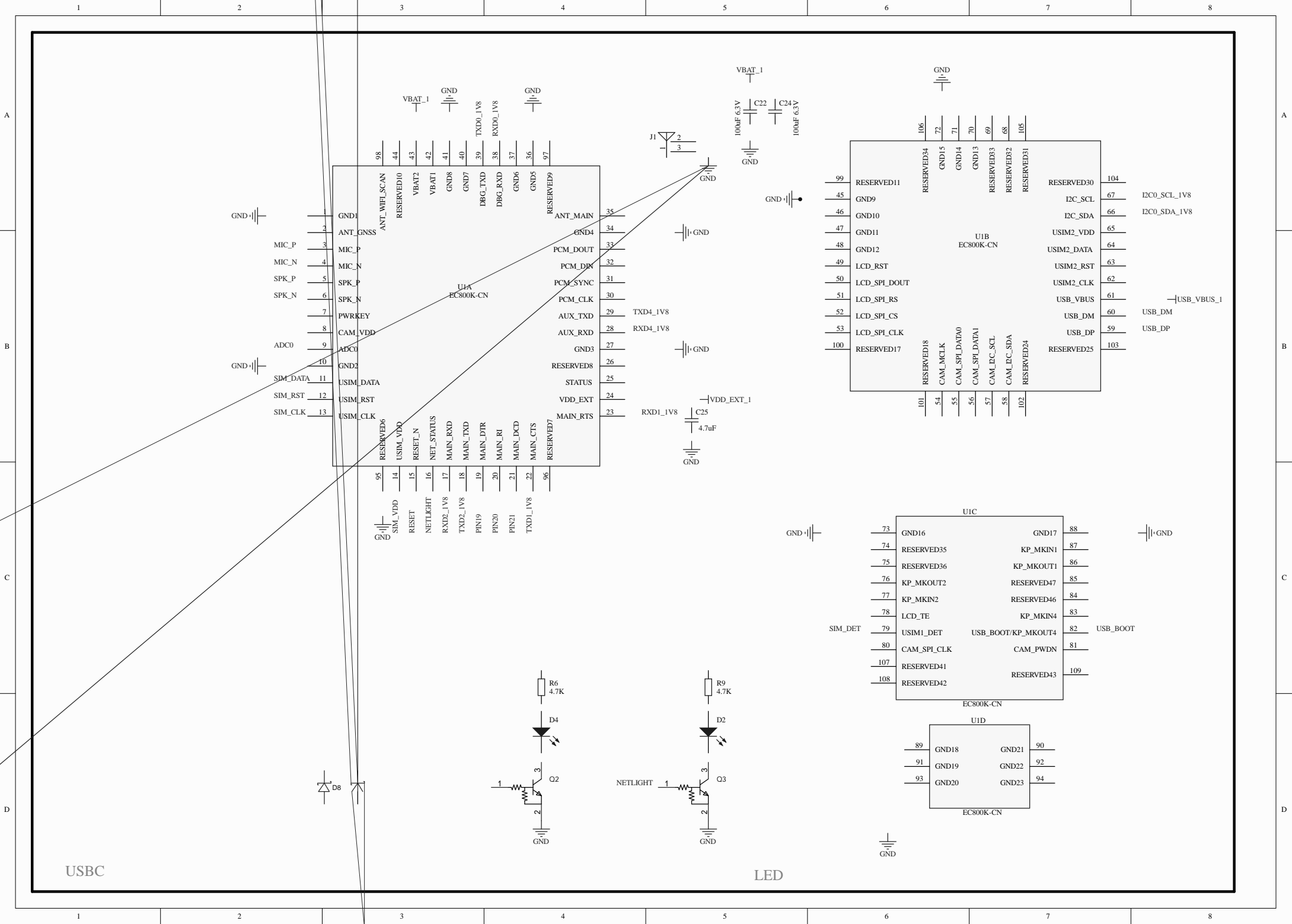
- 1
- 2

## 10 EVB



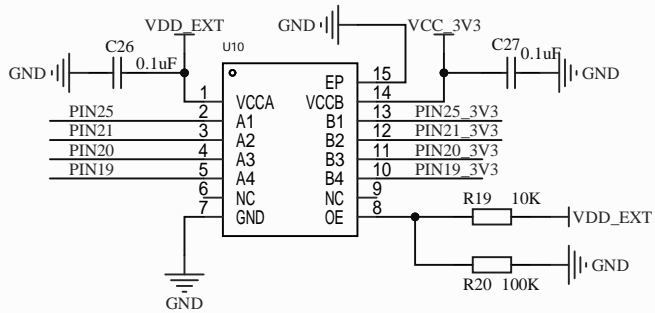
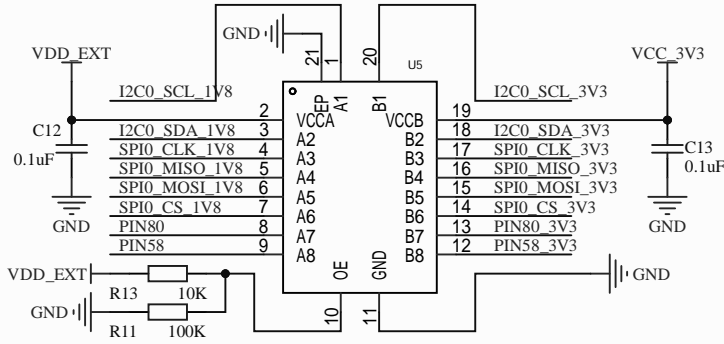
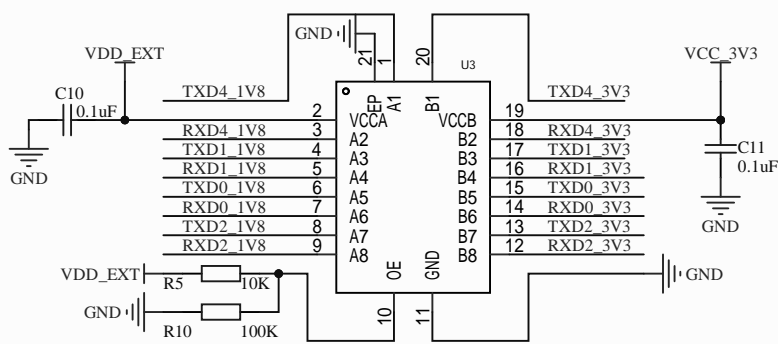


AUDIO

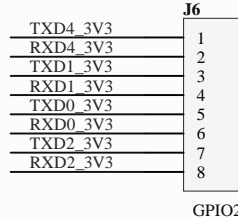
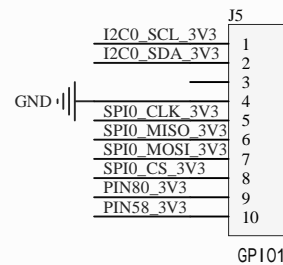
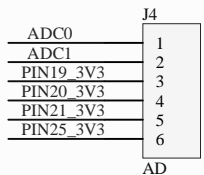
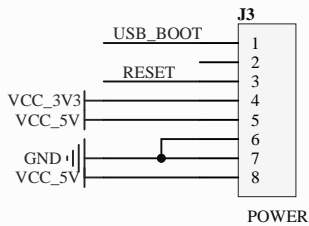


USBC

LED



### 电平转换



### 按键和排母



1

2

3

4

5

6

A

A

B

B

C

C

D

D

1

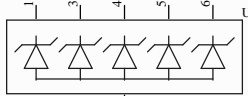
2

3

4

5

6



USIM